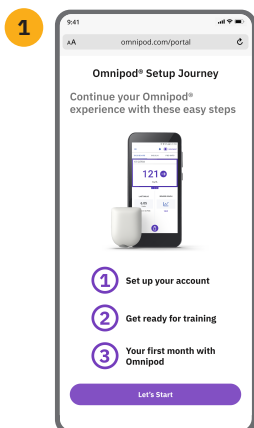


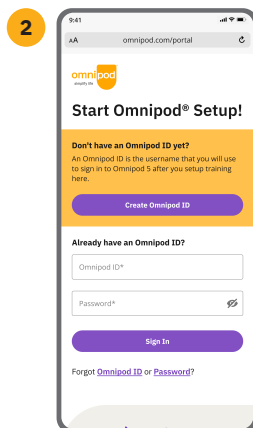
Welcome to Omnipod® 5!



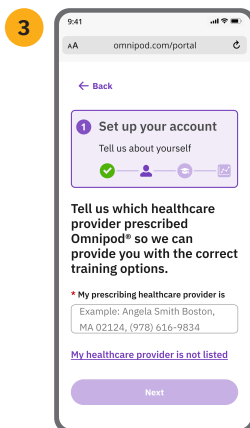
To begin **setting up your device & schedule training**:
Scan this code on your smartphone or visit omnipod.com/setup



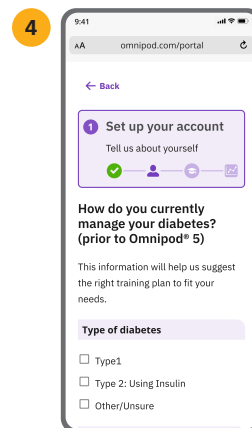
Select 'Let's Start'.



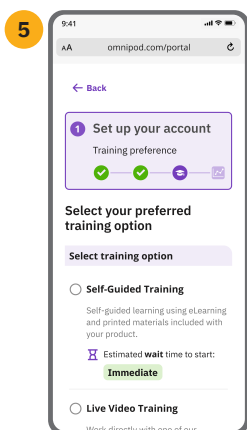
Sign in or create your Omnipod ID account.



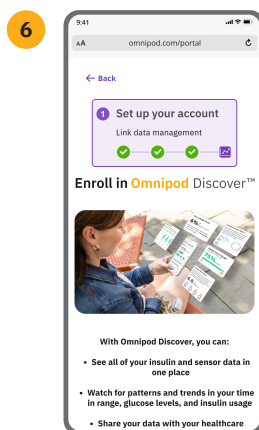
Search for your **prescribing healthcare provider**. This information may pre-populate.



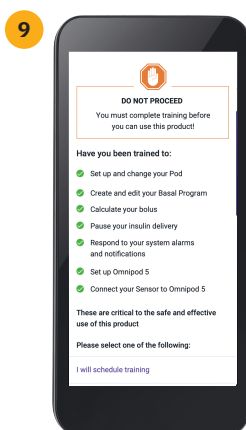
Complete questions about your **current diabetes management**.



Select your **preferred training method**.



Complete the steps to **Enroll in Omnipod Discover™**.



Turn on your **Controller** and sign in with your Omnipod ID.



Questions? Sign-in to PodderCentral® and chat online with a live agent or contact Product Support 24/7 at **1 (800) 591-3455**.

Prepare for Omnipod 5 Training:

If you have not scheduled training or registered your device, refer to the front side of this document and **complete all the required steps.**



Actions to complete before your training:

Confirm Pod, sensor, Controller and/or smartphone compatibility at omnipod.com/compatibility.

Dexcom G7 CGM Systems or Dexcom G6

Set up your Dexcom phone app, insert your sensor and start a sensor session.*
visit dexcom.com/guides for support

or

FreeStyle Libre 2 Plus sensor

Bring two new sensor packs to training.
You will start a new sensor during training.

Note: If you are using a standard Dexcom G7 or Dexcom G6 sensor, you will need to power off your Dexcom Receiver. If you are using a Dexcom G7 15 Day sensor, you will be able to use either your Dexcom G7 receiver or the mobile app.

Note: Omnipod 5 and Abbott FreeStyle Libre 2 Plus sensor users will need to link to Glooko to view and share their diabetes data. Omnipod Discover will be compatible with the Abbott FreeStyle Libre 2 Plus sensor in a future version.

Items you must bring to your training:

- 1 Omnipod 5 Pods (compatible with your sensor)
- 2 Compatible sensor** (see above sensor instructions)
- 3 Vial of U-100 rapid-acting insulin compatible with the Omnipod 5 System
- 4 Fully-charged Omnipod 5 Controller or compatible smartphone, if applicable**
- 5 Controller charger and/or smartphone charger
- 6 PodderCentral login information
- 7 Omnipod 5 User Guide

Please note:

- Expect your appointment to take up to 2 hours.
- Wear comfortable clothing with easy access to desired Pod placement area.

For help with your CGM sensor, contact your sensor product support at their provided support number.

Insulet Corporation 100 Nagog Park, Acton, MA 01720 • 1 (800) 591-3455 • omnipod.com

* For a list of compatible devices, visit: dexcom.com/compatibility.

** For a list of compatible smartphone devices, visit: omnipod.com/compatibility.

©2025 Insulet Corporation. Omnipod, the Omnipod logo, and Simplify Life are trademarks or registered trademarks of Insulet Corporation. All rights reserved. Dexcom and any related logos and design marks are either registered trademarks or trademarks of Dexcom, Inc. in the United States and/or other countries and used with permission. The sensor housing, FreeStyle, Libre, and related brand marks are marks of Abbott and used with permission. All other trademarks are the property of their respective owners. The use of third-party trademarks does not constitute an endorsement or imply a relationship or other affiliation. INS-OHS-12-2024-00146 V3.0