

For type 1 diabetes, ages 2 years and older

# Simplify Life<sup>®</sup>

WITH DIABETES

The Pod has an IP28 rating for up to 25 feet for 60 minutes. The Omnipod 5 Controller is not waterproof. The Dexcom G6 sensor and transmitter are water-resistant and may be submerged under eight feet of water for up to 24 hours without failure when properly installed.

omnipod<sup>®</sup>  
5  
automated insulin  
delivery system

MEET THE NEXT GENERATION,  
**Omnipod<sup>®</sup> 5**



**The only tubeless,  
automated insulin  
delivery system.**

Omnipod<sup>®</sup> 5 automatically adjusts insulin delivery to manage blood glucose levels, giving kids less of what they don't want and more of what they do.

No tubes.  
No multiple daily injections.  
Zero fingersticks.\*

**All to help simplify every day  
with diabetes.**

\* Fingersticks required for diabetes treatment decisions if symptoms or expectations do not match readings.



# 3 simple parts

## TO THE OMNIPOD® 5 AUTOMATED INSULIN DELIVERY SYSTEM



Pod and Dexcom G6 shown without necessary adhesive.  
Dexcom G6 sold separately and requires a separate prescription.



### Omnipod® 5 Controller or App

Take control of the entire system from a compatible smartphone\* or use the Controller, included with your child's first prescription.



### Pod

Tubeless, wearable, and waterproof† the Pod, with built-in SmartAdjust™ technology, sits right on your child's body and automatically adjusts insulin delivery for up to 3 days or 72 hours.



### Dexcom G6 CGM

Continuously sends glucose values to the Pod, so you can get real-time data‡ without the fingersticks.§ A separate prescription is required for the Dexcom G6 CGM. The Dexcom G6 is sold separately and must be used with the Dexcom mobile App. The Dexcom G6 receiver is not compatible.

\*For a list of compatible smartphone devices, visit [omnipod.com/compatibility](http://omnipod.com/compatibility)

†The Pod has an IP28 rating for up to 25 feet for 60 minutes. The Omnipod 5 Controller is not waterproof. The Dexcom G6 sensor and transmitter are water-resistant and may be submerged under eight feet of water for up to 24 hours without failure when properly installed.

‡Shah VN, et al. *Diabetes Technol and Ther.* 2018;20(6).

§Fingersticks required for diabetes treatment decisions if symptoms or expectations do not match readings.





Get on Omnipod 5. Start now with a free benefits check at [omnipod.com](http://omnipod.com)

# Letting kids BE KIDS



## The wearable, wireless Pod makes it all possible.

Easily forgotten, but never left behind—the Pod has made Omnipod® a concealable alternative to traditional pumps for years. And Omnipod 5 is no different, with each Pod providing up to 3 days, or 72 hours, of continuous, automated insulin delivery.

-  **Automatic**  
The Pod has built-in SmartAdjust™ technology—a predictive insulin control algorithm—to automatically increase, decrease, or pause insulin delivery.
-  **Tangle-proof tubeless system**  
Kids can jump, skip, cartwheel, and flip without tubes to hold them back.
-  **Waterproof\***  
The Pod can be worn during bath time, pool time, or puddle-jumping time.
-  **No multiple daily injections**  
With automatic insertion, never see or handle the insertion needle when using the Pod. It uses a small, built-in tube (cannula) for insulin delivery.

\* The Pod has an IP28 rating for up to 25 feet for 60 minutes. The Omnipod 5 Controller is not waterproof. The Dexcom G6 sensor and transmitter are water-resistant and may be submerged under eight feet of water for up to 24 hours without failure when properly installed.

## A CONTINUOUS Loop of control

Omnipod® 5 and the Dexcom G6 CGM are in constant communication. This communication enables automated insulin delivery, helping to protect against highs and lows<sup>1,2</sup> without manually controlling your child's insulin around the clock.

You will still need to bolus for meals. With Omnipod 5, this is done with the Omnipod 5 App or Controller.

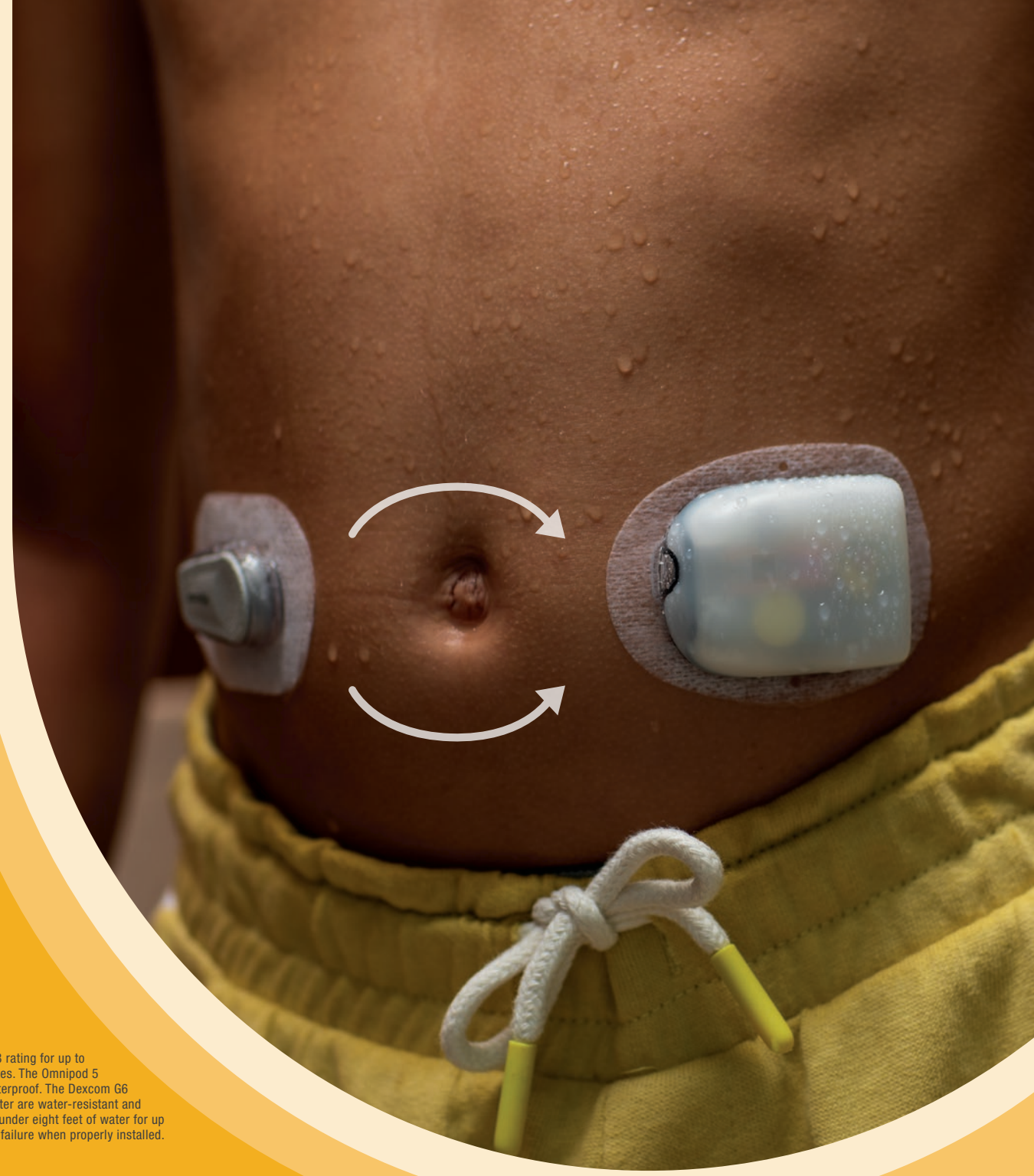
### Every 5 minutes:

- Dexcom G6 reports glucose levels to the Pod
- The Pod then increases, decreases, or pauses insulin delivery using SmartAdjust™ technology, a predictive insulin control algorithm
- Dexcom G6 picks up on any changes to your child's glucose level and reports that to the Pod to begin the loop of communication again

**Get on Omnipod 5.** Start now with a free benefits check at [omnipod.com](https://omnipod.com)

1. Study in 240 people with T1D aged 6 - 70 years involving 2 weeks standard diabetes therapy followed by 3 months Omnipod 5 use in Automated Mode. Average time in Target Glucose range (from CGM) for standard therapy vs Omnipod 5 in adults/adolescents = 64.7% vs. 73.9% and children = 52.5% vs. 68.0%. Brown et al. Diabetes Care (2021).  
2. Study in 80 people with T1D aged 2 - 5.9 yrs involving 2 weeks standard diabetes therapy followed by 3 months Omnipod 5 use in Automated Mode. Average time in Target Glucose range (from CGM) for standard therapy vs Omnipod 5 = 57.2% vs. 68.1%. SherrJL, et al. Diabetes Care (2022).

The Pod has an IP28 rating for up to 25 feet for 60 minutes. The Omnipod 5 Controller is not waterproof. The Dexcom G6 sensor and transmitter are water-resistant and may be submerged under eight feet of water for up to 24 hours without failure when properly installed.



# SmartAdjust™ technology:

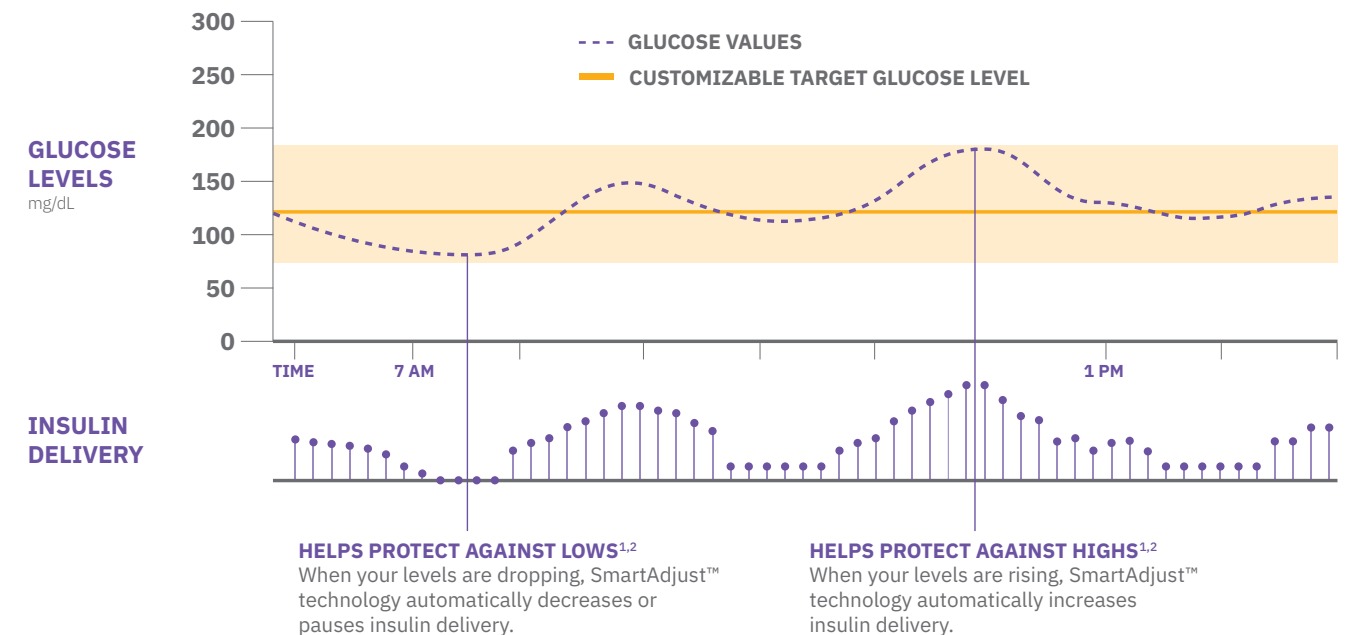
ALWAYS ADJUSTING,  
SO YOU DON'T HAVE TO



## SmartAdjust technology

is the brains behind the Omnipod® 5 Automated Insulin Delivery System. Every 5 minutes, the system automatically **increases, decreases, or pauses** insulin delivery based on your child's needs, helping to protect against highs and lows—even while sleeping.<sup>1,2</sup> You will still need to bolus for meals. With Omnipod 5, this is done with the Omnipod 5 App or Controller.

## How Omnipod® 5 works



1. Study in 240 people with T1D aged 6 - 70 years involving 2 weeks standard diabetes therapy followed by 3 months Omnipod 5 use in Automated Mode. Average time in Target Glucose range (from CGM) for standard therapy vs Omnipod 5 in adults/adolescents = 64.7% vs. 73.9% and children = 52.5% vs. 68.0%. Brown et al. Diabetes Care (2021).

2. Study in 80 people with T1D aged 2 - 5.9 yrs involving 2 weeks standard diabetes therapy followed by 3 months Omnipod 5 use in Automated Mode. Average time in Target Glucose range (from CGM) for standard therapy vs Omnipod 5 = 57.2% vs. 68.1%. SherrJL, et al. Diabetes Care (2022).



## Control it all

WITH A COMPATIBLE  
SMARTPHONE



Now, you can monitor and control the entire Omnipod® 5 System from a compatible smartphone.\*

- Give mealtime insulin with the SmartBolus Calculator
- Enable Activity feature
- See all of your child's diabetes trends and data in one place

\*For a list of compatible smartphone devices visit [omnipod.com/compatibility](https://omnipod.com/compatibility)

## Get set for activity & mealtime with a few taps

---



### Activity feature

Enable the Activity feature to reduce insulin delivery when glucose typically goes low, like when exercising.



### SmartBolus Calculator

The only built-in bolus calculator that automatically incorporates your child's CGM value and trends, so you don't have to.



The Pod has an IP28 rating for up to 25 feet for 60 minutes. The Omnipod 5 Controller is not waterproof. The Dexcom G6 sensor and transmitter are water-resistant and may be submerged under eight feet of water for up to 24 hours without failure when properly installed.



CUT LOOSE WITH TUBELESS

# Automated Insulin Delivery



## The first of its kind

Never before has automated insulin delivery (AID) been offered with a tubeless pump. Until now, choosing the freedom of AID also meant tethering up to a traditional, tubed insulin pump. Choosing multiple daily injections meant less freedom and more hassle.

With Omnipod® 5, you can finally trade up without trade-offs.

## The Omnipod 5 advantage

	Omnipod 5	Multiple daily injections	Traditional pumps
Automated insulin delivery	✓		✓
No daily shots	✓		✓
Tubeless & waterproof*	✓	✓	
Wearable	✓		✓
Full compatible smartphone control†	✓		

\* The Pod has an IP28 rating for up to 25 feet for 60 minutes. The Omnipod 5 Controller is not waterproof.

† For a list of compatible smartphone devices visit [omnipod.com/compatibility](https://omnipod.com/compatibility)

Check your benefits today at [omnipod.com](https://omnipod.com)



START CALLING THE SHOTS  
**Without the daily shots**

The Pod has an IP28 rating for up to 25 feet for 60 minutes. The Omnipod 5 Controller is not waterproof. The Dexcom G6 sensor and transmitter are water-resistant and may be submerged under eight feet of water for up to 24 hours without failure when properly installed.

**Pod life: 3 easy steps, every 3 days**



**1. FILL IT UP**

The Pod contains a 200-unit insulin reservoir. Once filled, it automatically primes itself and performs a series of safety checks.



**2. PLACE IT ON**

Place the Pod almost anywhere you would give your child an insulin injection. The cannula (a small tube) inserts automatically.



**3. TAP IT OUT**

Use the Controller or a compatible smartphone\* to control your child's insulin delivery with a few taps of a touchscreen.



**1 Pod Replaces  
 UP TO 14 INJECTIONS**



14 injections/3 days based on individuals on MDI taking  $\geq 3$  bolus and 1-2 basal injections/day multiplied by 3 days.<sup>†</sup> Pod shown without the necessary adhesive.  
<sup>†</sup>Chiang et al. Diabetes Care. 2014;37:2034-2054

**Ready for the next step?**  
 Get a benefits check at [omnipod.com](http://omnipod.com)

\* For a list of compatible smartphone devices visit [omnipod.com/compatibility](http://omnipod.com/compatibility)

## TAP THE Apps

View data or manage diabetes from anywhere with our suite of mobile apps.



### Control the Omnipod® 5 System with the Omnipod 5 App

From school to sports to sleepovers—kids have busy lives. Stay informed and in control with the Omnipod 5 App.



### Try the Simulator App to get the experience of using the Omnipod 5 app from your smartphone



### PodderCentral®

Manage your Omnipod® account online with the virtual platform. Set up your child's device, schedule training, see Omnipod 5 tutorial videos, and more.



### Insulet provided Glooko®

Review your child's diabetes patterns on your smartphone or computer,\* understand your child's blood glucose trends, and share it all with your care team.

- **Sync** all your diabetes devices to see all of your data in one place
- **Share** your data directly with your health care providers
- **See** patterns and determine when you have the most control

\* Must be connected to WiFi or cellular data, and Omnipod 5 users must have WiFi or cellular data access to receive updates in Glooko.

NO CONTRACT,  
NO COMMITMENT

## That's our OmnipodPromise™

Starting on Omnipod® 5 is all about simplifying life and feeling more freedom. When you get it through the pharmacy,\* you can get even more of that freedom with the OmnipodPromise. Start on Omnipod 5 at any time with:

- No contract, commitment, or obligation
- Omnipod 5 Controller included with your first prescription†

Don't wait, switch your child's diabetes management to Omnipod 5 today. You can make the switch even if you're tied to a contract with another pump.



“

*The Omnipod 5 has definitely allowed me to focus more on life and less on type 1 diabetes.*

**GRACIE B.**  
Podder

”

“

*I tried my first demo Pod at a lake. None of my friends even noticed.*

**KATIE R.**  
Podder since 2015

”

“

*As a mom, I really feel like Omnipod has lessened my day-to-day worry.*

**MAIRE K.**  
Mom of Podder, Biren

”

“

*Omnipod allows us to focus more on his childhood than his diabetes.*

**RACHEL C.**  
Mom of Podder, Frankie

”

\* Only available for users with valid prescription and coverage through their pharmacy benefit.

† Subject to co-pays as required by insurance coverage.

Ready for the next step? Get a benefits check at [omnipod.com](https://omnipod.com)

# Simplify

GETTING STARTED

## We'll take care of your benefits check.

Whether you're looking to make the switch to the Omnipod® 5 Automated Insulin Delivery System or just looking for more information, the next step is simple:

- Visit [omnipod.com](https://omnipod.com) to check your benefits
- Our team will take a close look at your benefits to see what your insurance will cover
- Unlike traditional pumps, Omnipod 5 may be covered by your private pharmacy plan

We'll do our part to make your life easier.

## GET STARTED ON Omnipod 5

- No contract.**
- No commitment.**
- No obligation.**

Check your benefits today at [omnipod.com](https://omnipod.com)

Pod shown without the necessary adhesive.



## Indications for use

The Omnipod® 5 ACE Pump (Pod) is intended for the subcutaneous delivery of insulin, at set and variable rates, for the management of diabetes mellitus in persons requiring insulin. The Omnipod 5 ACE Pump is able to reliably and securely communicate with compatible, digitally connected devices, including automated insulin dosing software, to receive, execute, and confirm commands from these devices. The Omnipod 5 ACE Pump is intended for single patient, home use and requires a prescription.

SmartAdjust™ technology is intended for use with compatible integrated continuous glucose monitors (iCGM) and alternate controller enabled (ACE) pumps to automatically increase, decrease, and pause delivery of insulin based on current and predicted glucose values. SmartAdjust technology is intended for the management of type 1 diabetes mellitus in persons 2 years of age and older. SmartAdjust technology is intended for single patient use and requires a prescription.

The Omnipod 5 SmartBolus Calculator is software intended for the management of diabetes in persons aged 2 and older requiring rapid-acting U-100 insulin. The Omnipod 5 SmartBolus Calculator calculates a suggested bolus dose based on user-entered carbohydrates, most recent sensor glucose value (or blood glucose reading if using fingerstick), rate of change of the sensor glucose (if applicable), insulin on board (IOB), and programmable correction factor, insulin to carbohydrate ratio, and target glucose value. The Omnipod 5 SmartBolus Calculator is intended for single patient, home use and requires a prescription.

## The Omnipod 5 System is NOT recommended for people who:

- are unable to monitor glucose as recommended by their healthcare provider
- are unable to maintain contact with their healthcare provider
- are unable to use the Omnipod 5 System according to instructions
- are taking hydroxyurea as it could lead to falsely elevated CGM values and result in over-delivery of insulin that can lead to severe hypoglycemia
- do NOT have adequate hearing and/or vision to allow recognition of all functions of the Omnipod 5 System, including alerts, alarms, and reminders

Device components including the Pod, CGM transmitter, and CGM sensor must be removed before Magnetic Resonance Imaging (MRI), Computed Tomography (CT) scan, or diathermy treatment. In addition, the Controller and smartphone should be placed outside of the procedure room. Exposure to MRI, CT, or diathermy treatment can damage the components.

Warning: SmartAdjust technology should NOT be used by anyone under the age of 2 years old. SmartAdjust technology should also NOT be used in people who require less than 5 units of insulin per day as the safety of the technology has not been evaluated in this population.

## Compatible insulins

The Omnipod 5 ACE Pump (Pod) is compatible with the following U-100 insulins: NovoLog®, Humalog®, and Admelog®

SmartAdjust technology is compatible with the following U-100 insulins: NovoLog®, Humalog®, and Admelog®

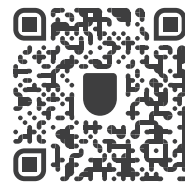
The Omnipod 5 SmartBolus Calculator is compatible with the following U-100 insulins: NovoLog®, Humalog®, and Admelog®

**omnipod**<sup>®</sup>  
5  
automated insulin  
delivery system

THE FIRST & ONLY  
**Tubeless  
Automated**  
INSULIN DELIVERY SYSTEM  
IN THE U.S.



Check your benefits  
today at [omnipod.com](https://omnipod.com)



Customer Care: 800-591-3455  
Insulet Corporation, 100 Nagog Park, Acton, MA 01720

©2022 Insulet Corporation. Omnipod, the Omnipod 5 logo, Omnipod DISPLAY, OmnipodPromise, Simplify Life, SmartAdjust, PodderCentral and Podder are trademarks or registered trademarks of Insulet Corporation. All rights reserved. Glooko is a trademark of Glooko, Inc. and used with permission. The Bluetooth® word mark and logos are registered trademarks owned by Bluetooth SIG, Inc. and any use of such marks by Insulet Corporation is under license. Dexcom and Dexcom G6 are registered trademarks of Dexcom, Inc. and used with permission. All other trademarks are the property of their respective owners. The use of third party trademarks does not constitute an endorsement or imply a relationship or other affiliation. INS-OHS-05-2021-00011 v3.0